



Easy 6T Manual

Electrical Supply

CODE: 925806120

Trays	6T GN1/1 - 6T 60x40 cm
Outside dimension	850 L x 915 P x 830 H mm
Tray distance	80 mm
Power	10,7 kW
Weight	81 Kg
Max temperature	270° C
Power supply	400 V ~ 3PH + N + PE 400 V ~ 2PH + N + PE 230 V ~ 3PH + PE 230 V ~ 1PH + N + PE 50-60 Hz

Equipment

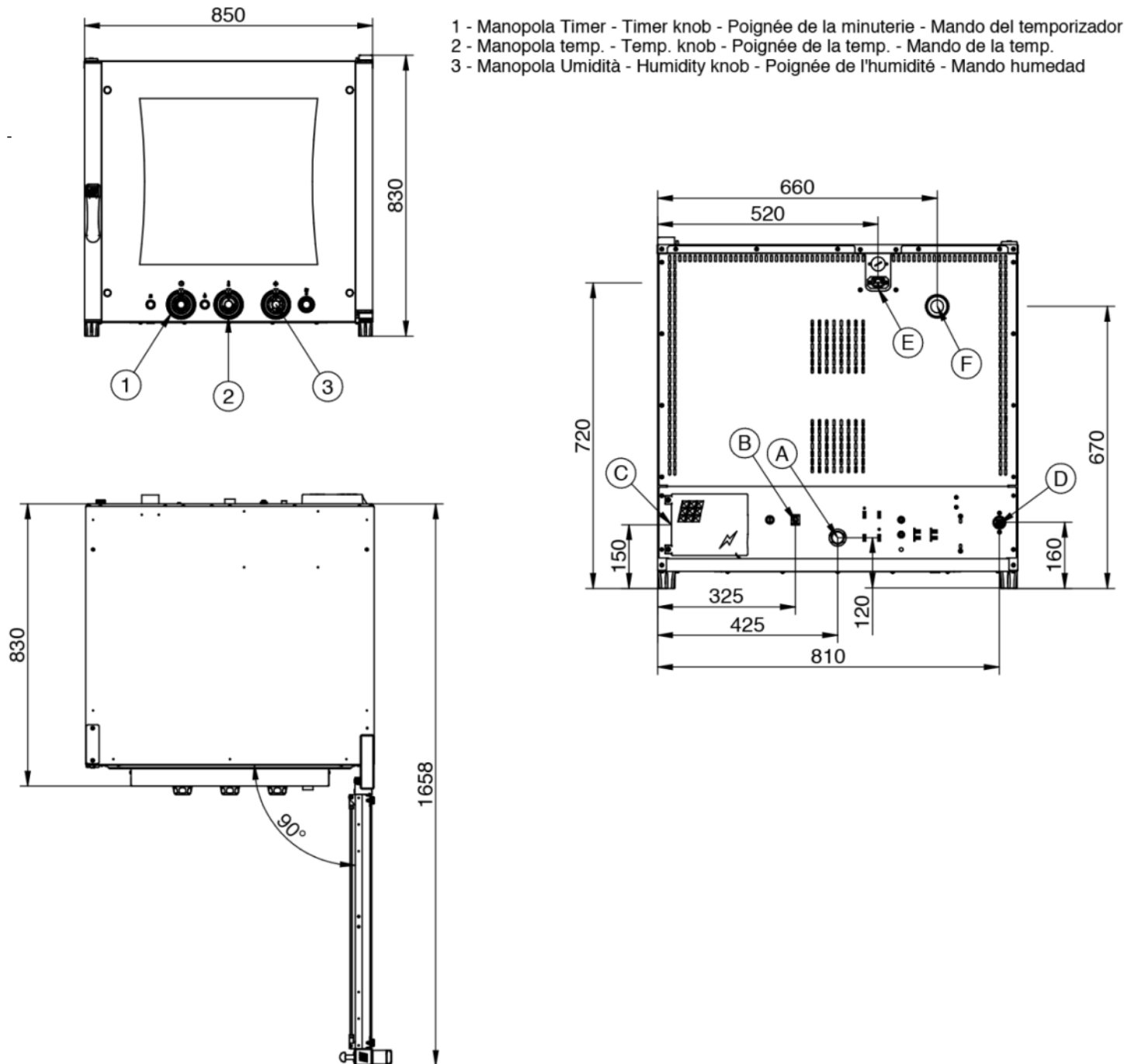
BakeAIR multi-fan system	Double low emissive glass	High-performance thermal insulation
Two fan speeds	Three cooking modes	Rounded baking chamber
Modularity	CE Certificate	Steam control in percentage BakeSTEAM
Manual mode	Overlap option	Openable inner glass for easy cleaning

Options

Left door opening

Easy 6T Manual

Electrical Supply



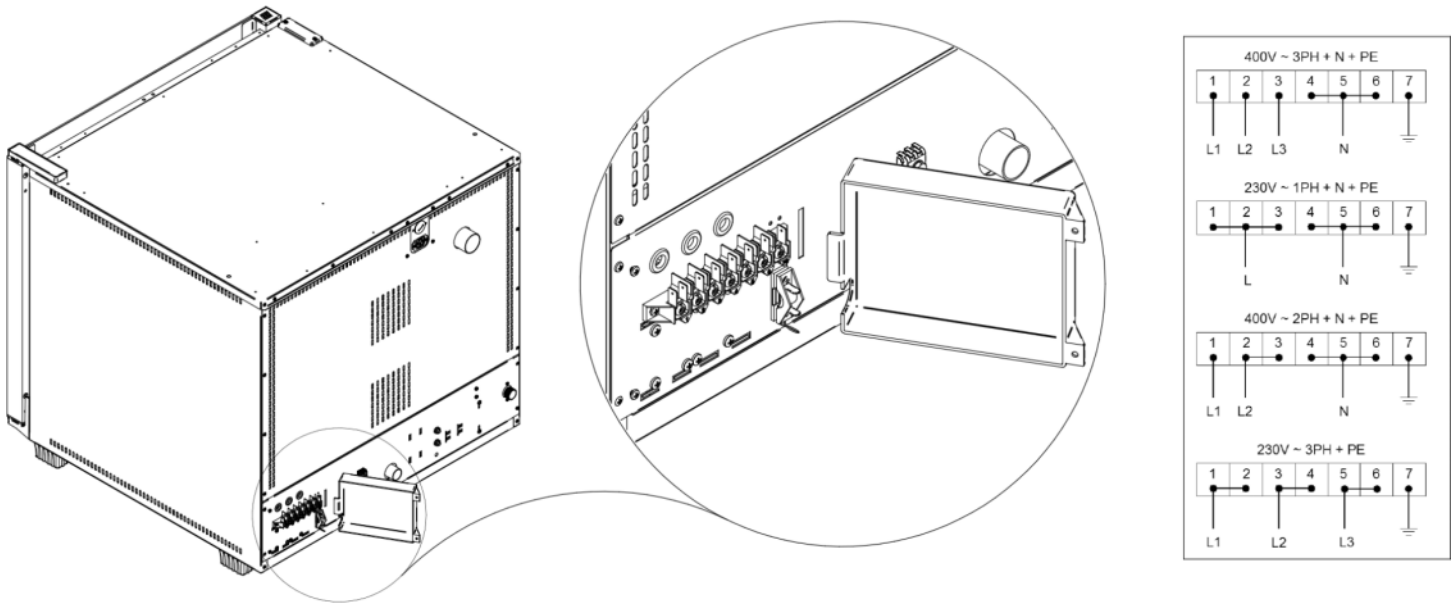
Legend

- A - Drain liquid Ø 30mm
- B - Equipotential terminal comb
- C - Electric supply
- D - Water inlet 3/4"
- E - Extracting hood supply
- F - Steam exhaust Ø 50mm

Easy 6T Manual

Electrical Supply

Supply and Connections



Packaging



Packing size:	920 L x 1000 P x 980 H mm
Net weight:	81 Kg
Gross weight:	99 Kg