



## Easy 6T Essential

Gas Supply

CODE: 925806550

Trays	6T GN1/1 - 6T 60x40 cm
Outside dimension	850 L x 915 P x 940 H mm
Tray distance	80 mm
Power	14,5 kW - 12.450 Kcal/h (*) - Ele. 0,85 kW
Weight	88 Kg
Max temperature	270° C
Power supply	400 V ~ 3PH + N + PE 400 V ~ 2PH + N + PE 230 V ~ 3PH + PE 230 V ~ 1PH + N + PE 50-60 Hz

### Equipment

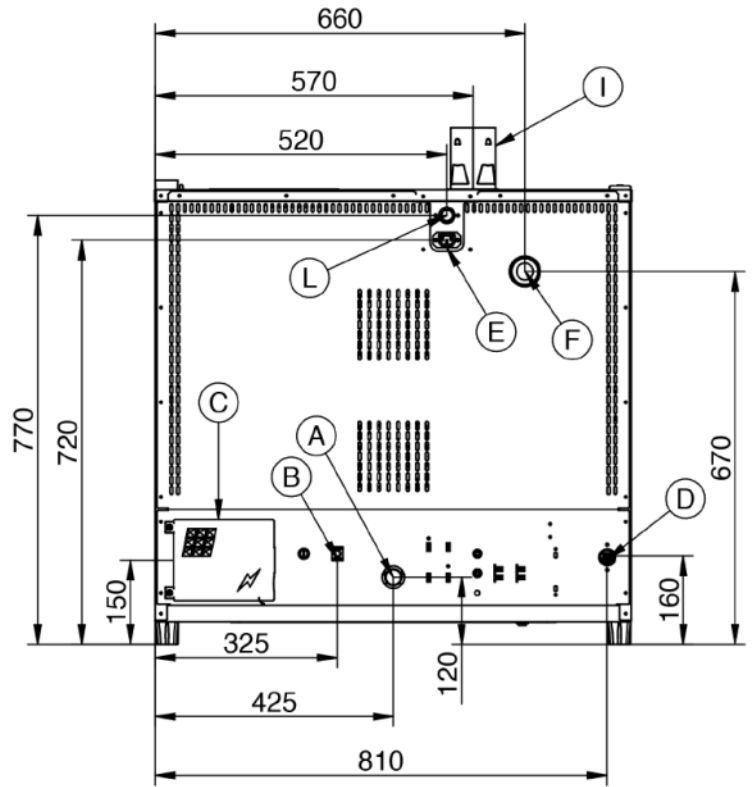
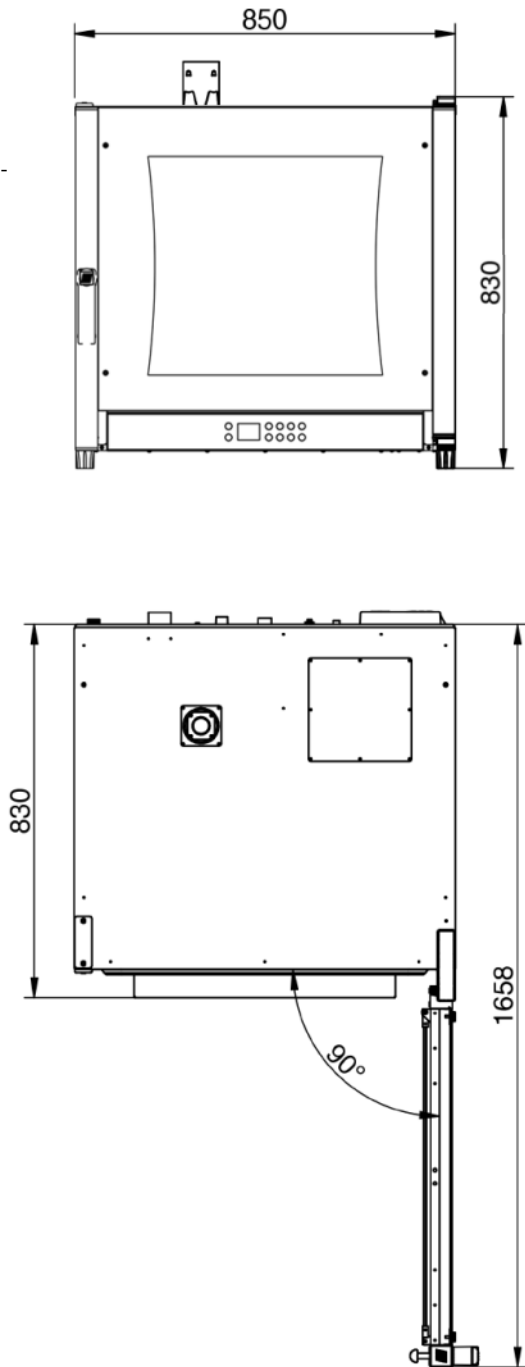
BakeAIR multi-fan system	Double low emissive glass	High-performance thermal insulation
Premix burner BakeFIRE	Two fan speeds	Three cooking modes
Automatic chimney opening BakeDRY	Rounded baking chamber	Heat exchanger inside the cooking chamber
CE Certificate	Steam control in percentage BakeSTEAM	Customized programs mode
Manual mode	Automatic preheating	Cooling program
Openable inner glass for easy cleaning		

### Options

Left door opening	Extendable height-adjustable feet kit
-------------------	---------------------------------------

Easy 6T Essential

Gas Supply



**Legend**

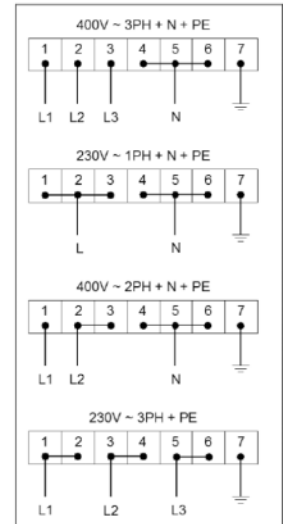
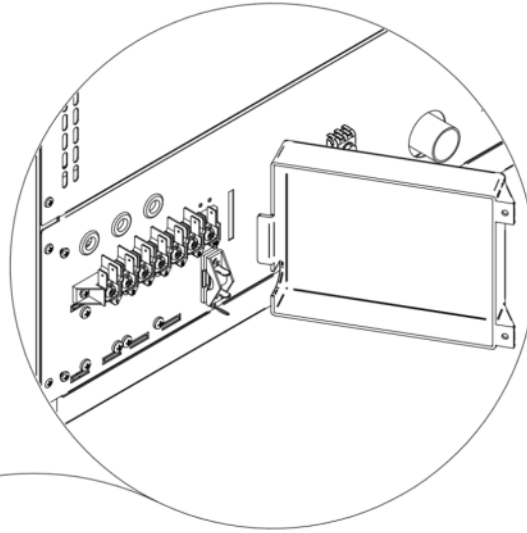
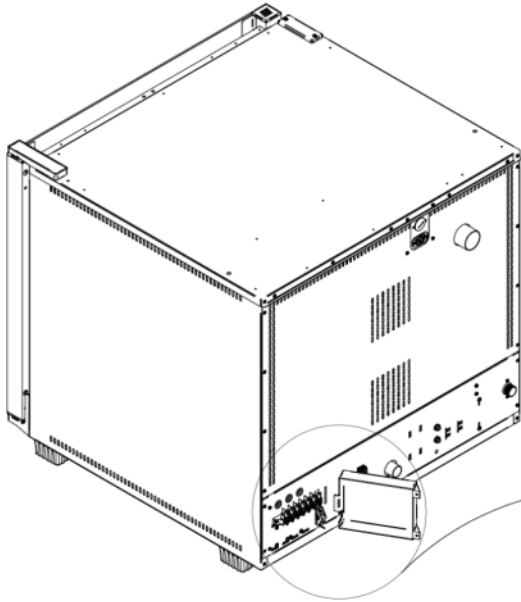
- A - Drain liquid Ø 30mm
- B - Equipotential terminal comb
- C - Electric supply 0,85 kW
- D - Water inlet 3/4"
- E - Extracting hood supply
- F - Steam exhaust Ø 50mm

- I - Ø 80mm Combustion chamber fumes exhaust
- L - Gas supply inlet 3/4"

Easy 6T Essential

Gas Supply

Supply and Connections



Packaging



Packing size:	920 L x 1000 P x 1070 H mm
Net weight:	88 Kg
Gross weight:	107 Kg