



Mistral 10TTR Classic

Electrical Supply

CODE: 926010500

Trays	10T 60x40 66x46 cm
Outside dimension	1000 L x 900 P x 1145 H mm
Tray distance	90 mm
Power	20 kW
Weight	205 Kg
Max temperature	270° C
Power supply	400 V ~ 3PH + N + PE 400 V ~ 2PH + N + PE 230 V ~ 3PH + PE 230 V ~ 1PH + N + PE 50-60 Hz

Equipment

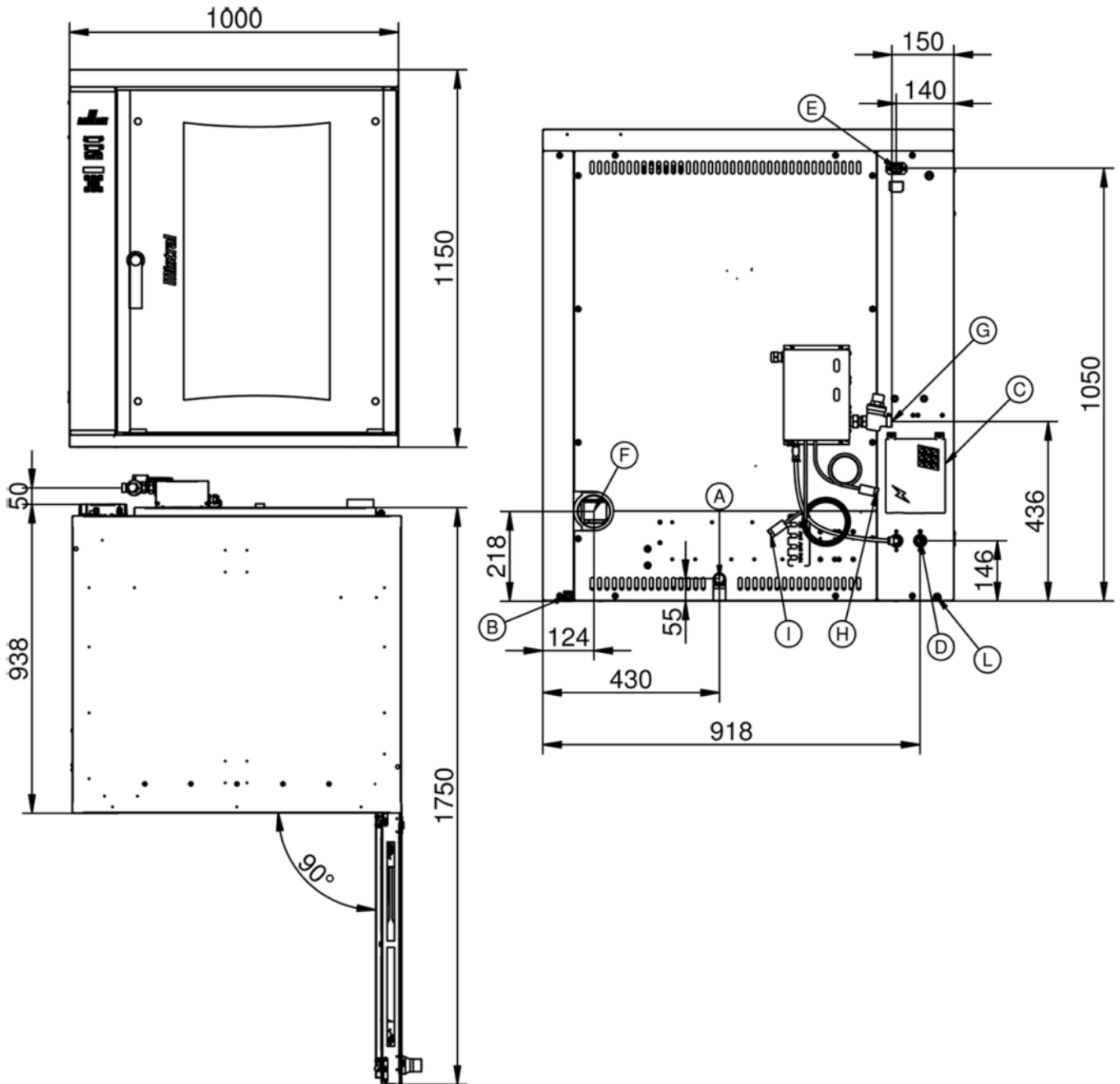
Led illumination	BakeAIR multi-fan system	Double low emissive glass
High-performance thermal insulation	BakeCLEAN automatic washing system	Blue LED for chamber cleaning check
Water collection tray	Five fan speeds and semi-static cooking	Five cooking modes
Automatic chimney opening BakeDRY	Program blocking with password	Rounded baking chamber
Modularity	CE Certificate	Automatic control of dry/steam balance inside the chamber
Steam control in percentage BakeSTEAM	Automatic control of the cooking level and load	Multi-timer function for multiple and mixed cooking
Storage, viewing* and exportation of cooking data (haccp)	Customized programs mode	Manual mode
Preset programs mode	ETL / NSF certification	Automatic preheating
Cooling program	Delayed start programming	Delayed cooking programming
Pre-loaded and online cookbook	Automatic detection and errors report	Safety rinse
Overlap option	Openable inner glass for easy cleaning	Fan inversion, speed control and motor brake

Options

Left door opening	Data logger for USB connection
-------------------	--------------------------------

Mistral 10TTR Classic

Electrical Supply



Legend

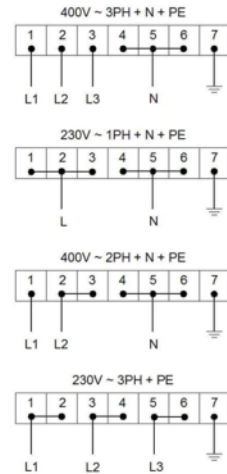
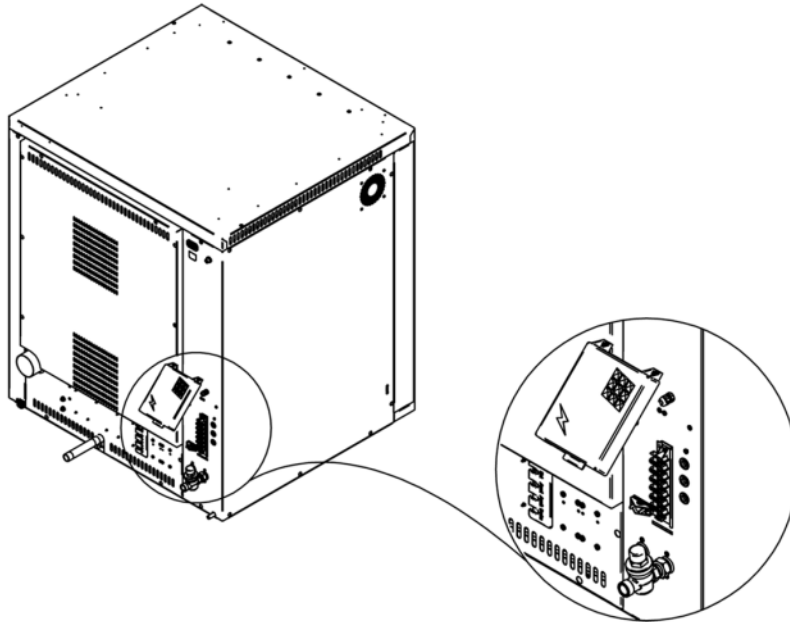
- A - Drain liquid 3/4"
- B - Equipotential terminal comb
- C - Electric supply
- D - Water inlet 3/4"
- E - Extracting hood supply
- F - Steam exhaust Ø 80mm

- G - Inlet for washing kit 3/4"
- H - Wash suction pipe for rinse aid
- I - Wash suction pipe for detergent
- L - Underdoor water drain Ø 12

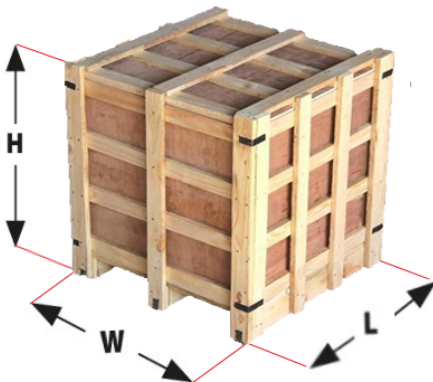
Mistral 10TTR Classic

Electrical Supply

Supply and Connections



Packaging



Packing size:	1140 L x 1220 P x 1370 H mm
Net weight:	205 Kg
Gross weight:	248 Kg