



Mistral 6TTR Master Pro

Electrical Supply

CODE: 926006520

Trays	6T 60x40 66x46 cm
Outside dimension	1000 L x 900 P x 695 H mm
Tray distance	80 mm
Power	10 kW
Weight	138 Kg
Max temperature	270° C
Power supply	400 V ~ 3PH + N + PE 400 V ~ 2PH + N + PE 230 V ~ 3PH + PE 230 V ~ 1PH + N + PE 50-60 Hz

Equipment

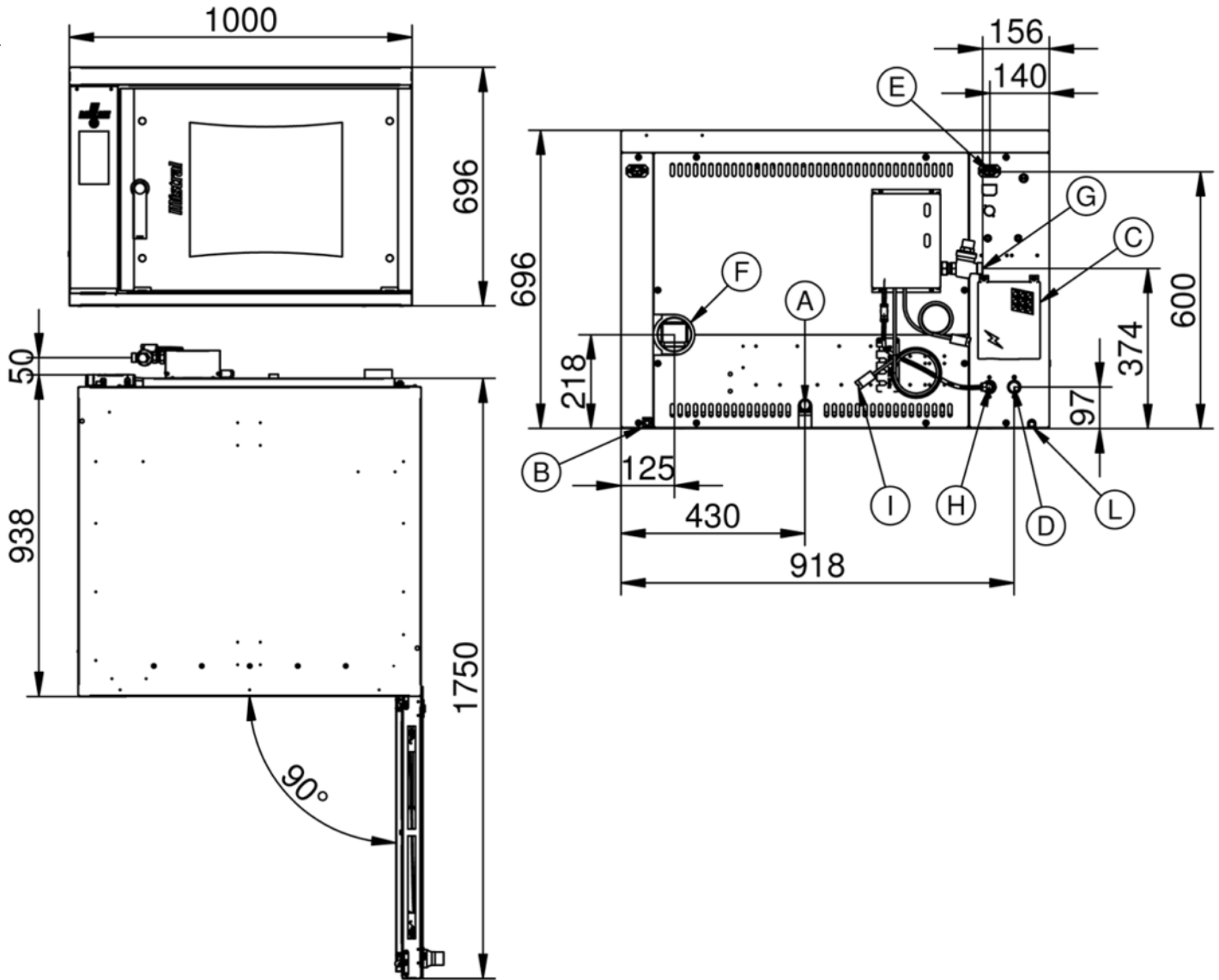
Led illumination	BakeAIR multi-fan system	Double low emissive glass
High-performance thermal insulation	BakeCLEAN automatic washing system	USB connection
Blue LED for chamber cleaning check	Water collection tray	Five fan speeds and semi-static cooking
Five cooking modes	Automatic chimney opening BakeDRY	Program blocking with password
Rounded baking chamber	Modularity	CE Certificate
Automatic control of dry/steam balance inside the chamber	Steam control in percentage BakeSTEAM	Automatic control of the cooking level and load
Time-programmable steam injection	Manual steam injection	Storage, viewing* and exportation of cooking data (haccp)
Customized programs mode	Manual mode	Preset programs mode
ETL / NSF certification	Automatic preheating	Cooling program
Delayed start programming	Delayed cooking programming	Cooking chamber automatic cooling
Pre-loaded and online cookbook	Automatic detection and errors report	Safety rinse
Overlap option	Openable inner glass for easy cleaning	Fan inversion, speed control and motor brake

Options

Ethernet connection and wi-fi set-up BakeNET	Left door opening
--	-------------------

Mistral 6TTR Master Pro

Electrical Supply



Legend

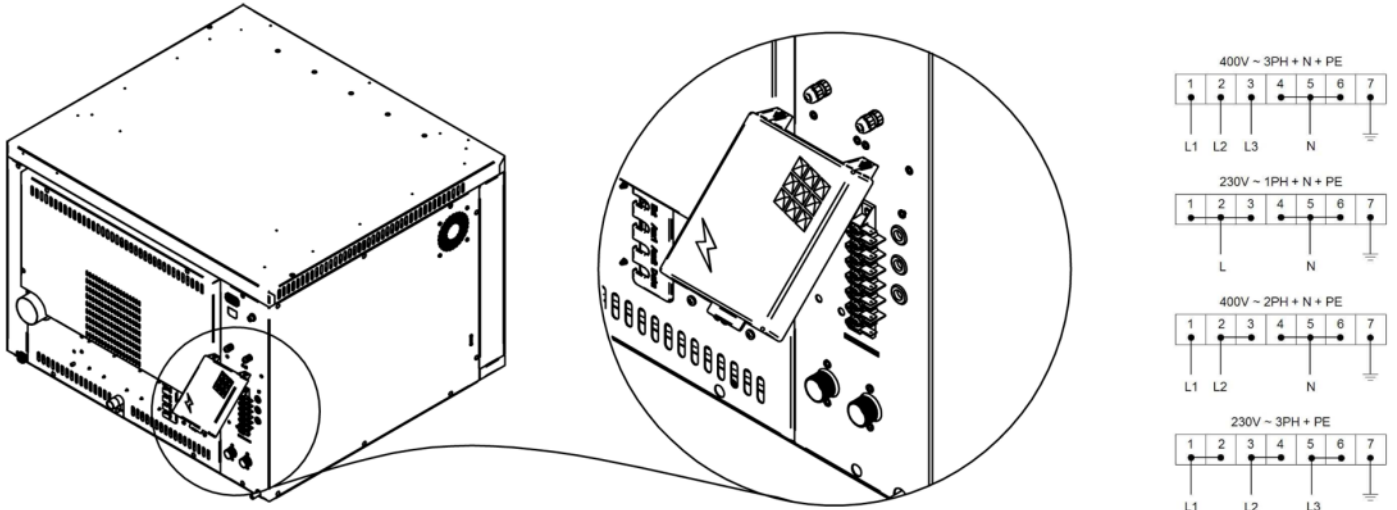
- A - Drain liquid 3/4"
- B - Equipotential terminal comb
- C - Electric supply
- D - Water inlet 3/4"
- E - Extracting hood supply
- F - Steam exhaust Ø 80mm

- G - Inlet for washing kit 3/4"
- H - Wash suction pipe for rinse aid
- I - Wash suction pipe for detergent
- L - Underdoor water drain Ø 12

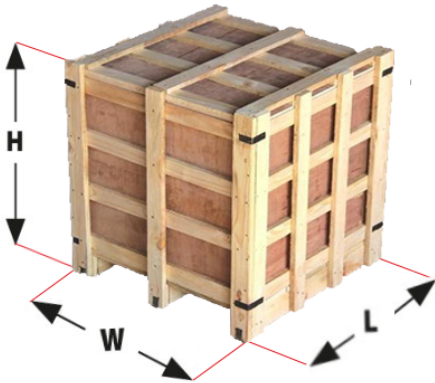
Mistral 6TTR Master Pro

Electrical Supply

Supply and Connections



Packaging



Packing size:	1070 L x 1100 P x 950 H mm
Net weight:	138 Kg
Gross weight:	172 Kg