



## Rotorbake T5 15T Master Pro

Gas Supply

CODE: 825818980

Trays	15T 40x60cm (3.6m <sup>2</sup> )   40x80cm (4.8m <sup>2</sup> )   46x66cm (4.55 m <sup>2</sup> )   50x70cm (5.25 m <sup>2</sup> )   60x65cm (5.85 m <sup>2</sup> )
Outside dimension	1150 L x 1730 P x 2320 H mm
Tray distance	93 mm
Power	34.8 kW - 30.000 Kcal/h - Ele. 1,6 kW
Weight	715 Kg
Max temperature	270° C
Power supply	400 V ~ 3PH + N + PE 230 V ~ 3PH + PE 230 V ~ 1PH + N + PE 50-60 Hz

### Equipment

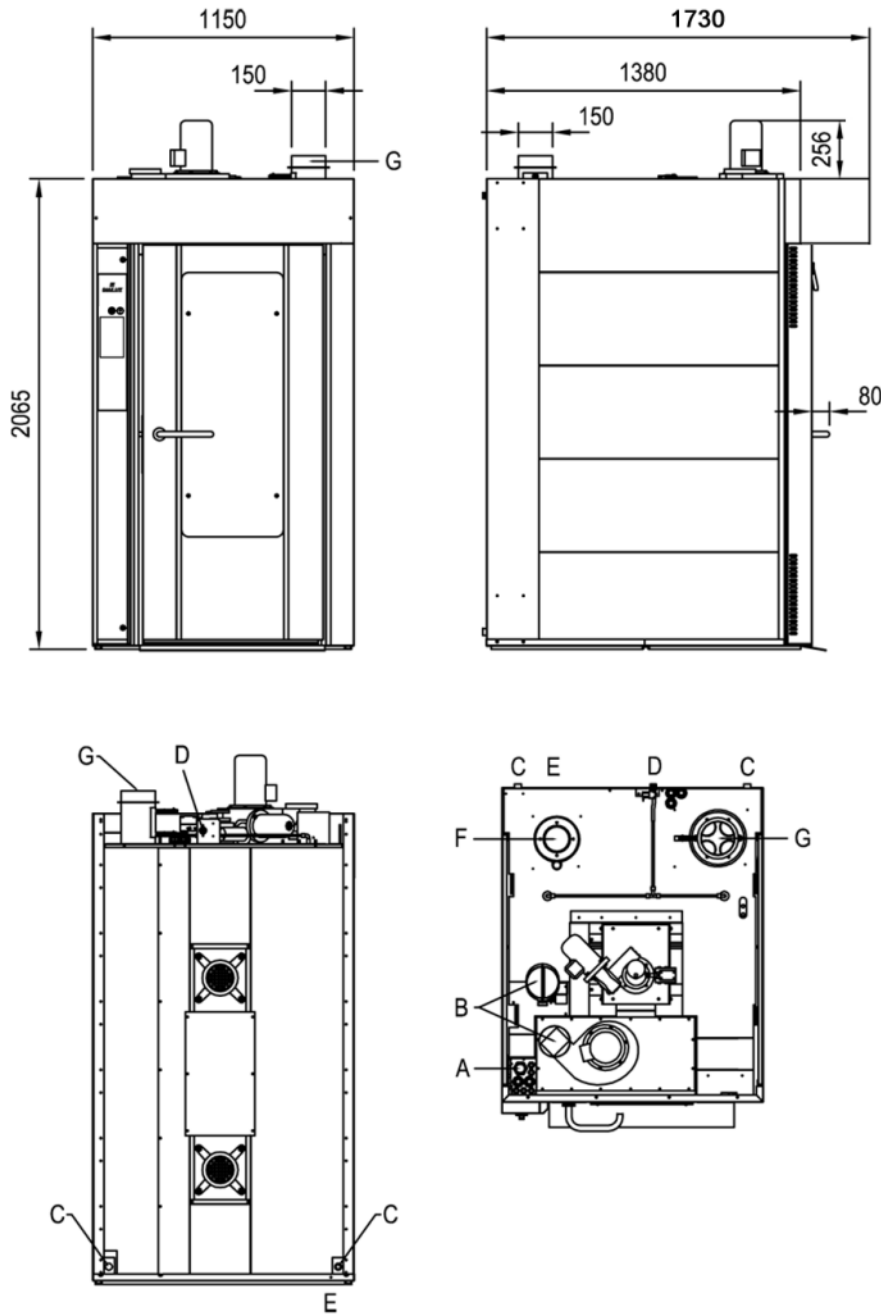
BakeAIR multi-fan system	Double low emissive glass	High-performance thermal insulation
USB connection	Five fan speeds and semi-static cooking	Five cooking modes
Automatic chimney opening BakeDRY	Program blocking with password	Combustion chamber covered by 7-year warranty
Heat exchanger inside the cooking chamber	CE Certificate	Automatic control of dry/steam balance inside the chamber
Steam control in percentage BakeSTEAM	Automatic control of the cooking level and load	Double steamer RotorBake
Multi-timer function for multiple and mixed cooking	Time-programmable steam injection	Manual steam injection
Storage, viewing* and exportation of cooking data (haccp)	Customized programs mode	Manual mode
Preset programs mode	ETL / NSF certification	Automatic preheating
Cooling program	Delayed start programming	Delayed cooking programming
Cooking chamber automatic cooling	Pre-loaded and online cookbook	Automatic detection and errors report

### Options

Ethernet connection and wi-fi set-up BakeNET	S/S external paneling	Rotating platform
--	-----------------------	-------------------

**Rotorbake T5 15T Master Pro**

Gas Supply



**Legend**

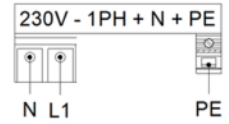
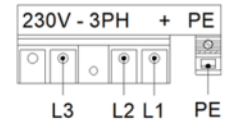
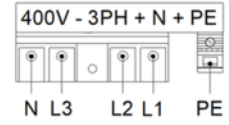
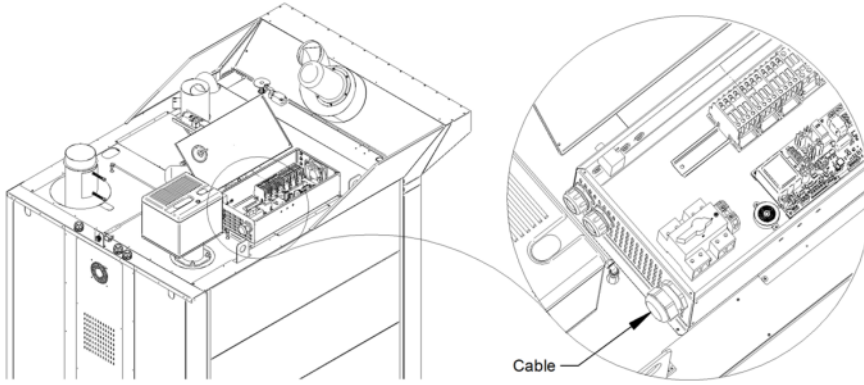
- A - Electric supply 1,6 kW
- B - Steam exhaust Ø 140
- C - Drain liquid 1"
- D - Water inlet 3/4"
- E - Equipotential terminal comb
- F - Burner

G - Ø 150mm Combustion chamber fumes exhaust

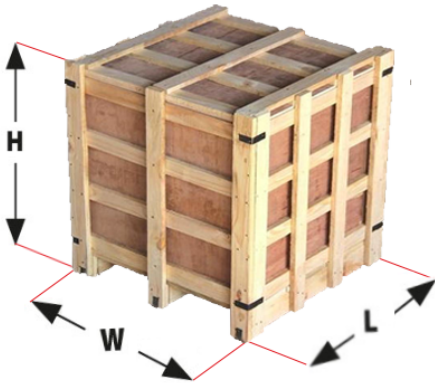
**Rotorbake T5 15T Master Pro**

Gas Supply

**Supply and Connections**



**Packaging**



Packing size:	1270 L x 1650 P x 2300 H mm
Net weight:	715 Kg
Gross weight:	785 Kg